

R&D Workshop on Deepwater Technology

Jointly organised by:
SMI & MI@NUS

Supported by:
A*STAR
MI@NTU, MI@SP & MI@NP

Workshop Itinerary

TIME	EVENT
12:30 pm	Registration and Networking Lunch (1 hour)
1:30 pm	Opening Remarks (10 mins) By Mr Heng Chiang Gnee, Executive Director, SMI
1:40 pm	Presentation Session 1 on Offshore Structures by ABS, NUS, IMRE, NTU (1 hour)
2:40 pm	Open Discussion 1 on Offshore Structures (45 mins)
3:25 pm	Teabreak (20 mins)
3:45pm	Presentation Session 2 on Subsea and Pipeline Technology by DNV, Subsea 7, NUS, IHPC (1 hour)
4:45pm	Open Discussion 2 on Subsea and Pipeline Technology (45 mins)
5:30pm	Concluding Remarks (10 mins) By Mr Heng Chiang Gnee, Executive Director, SMI
END OF WORKSHOP	

OPENING REMARKS

Mr Heng Chiang Gnee, Executive Director, Singapore Maritime Institute

Announcement of SMI in Oct 2010



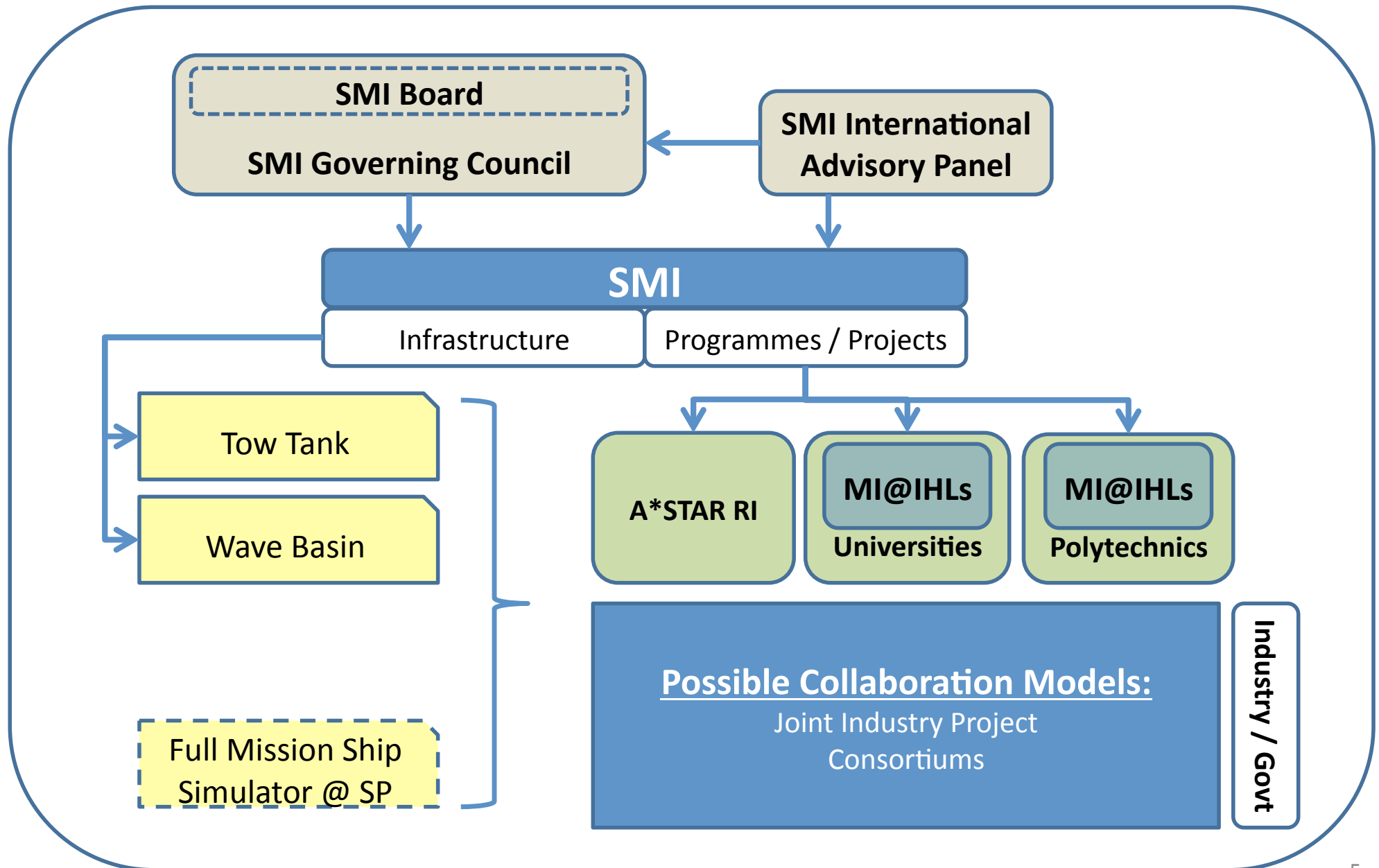
A total budget of S
\$350Mil for

1. Testing Infrastructure
2. R&D
3. Education & Training
4. Policy matters

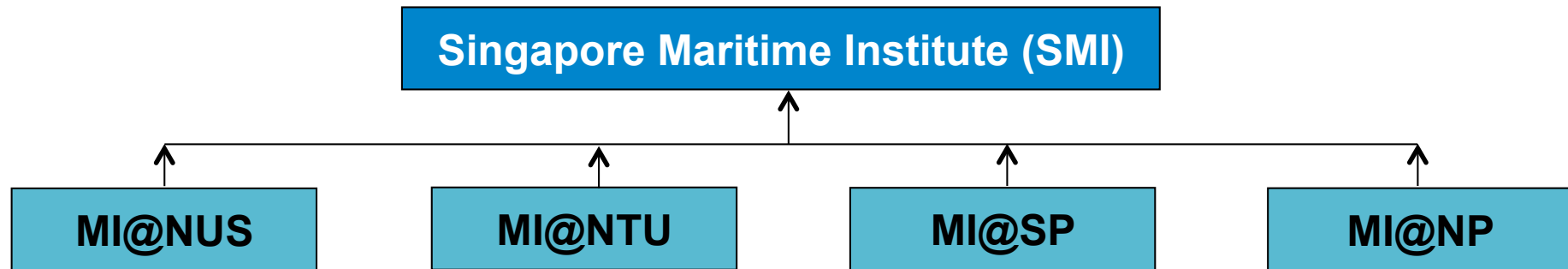
SMI started
operations since
1 April 2011



SMI's Operating Model



Maritime Institute@IHLs



Roles of the MI@IHL

- (a) **Drive maritime** programmes, projects and **initiatives** within the IHLs
- (b) **Engage the industry** players to develop collaborative programmes/projects
- (c) **Organise** workshops, seminars, and other **academia-industry events**
- (d) Manage and **report on the progress** of the funded programmes/projects

Objectives

- **Highlight common research challenges**
- **Prioritize research areas for grant call**
- **Encourage/Form partnership** on joint industry projects

Funding Mechanism

- To be shared at the end of the workshop

THANK YOU