

Marine offshore structures

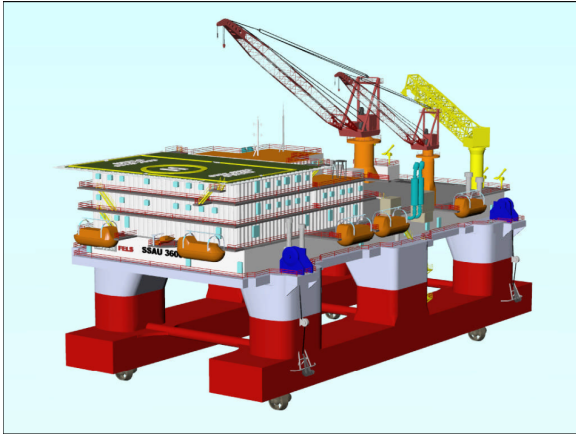
Dr. Zhenhua Huang

School of Civil and Environmental Engineering
Nanyang Technological University

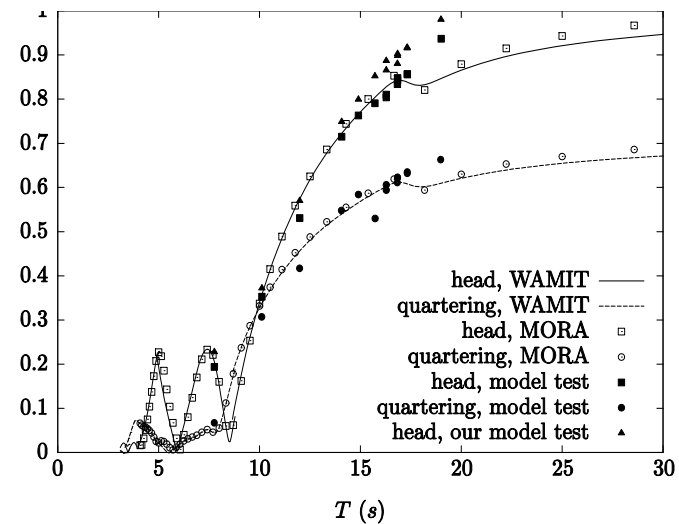
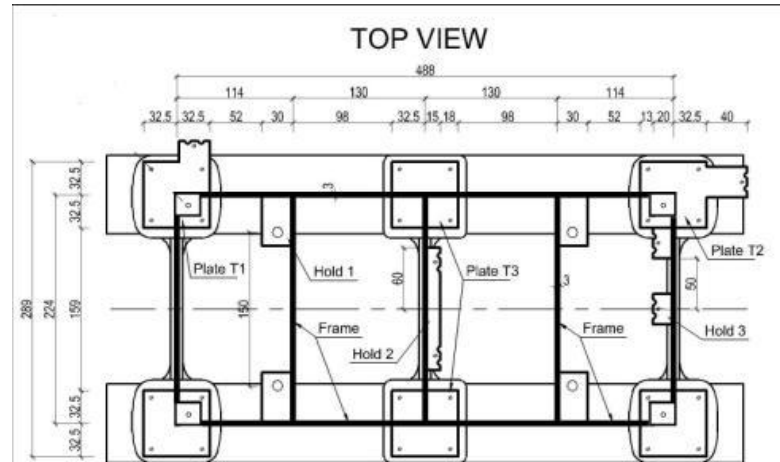
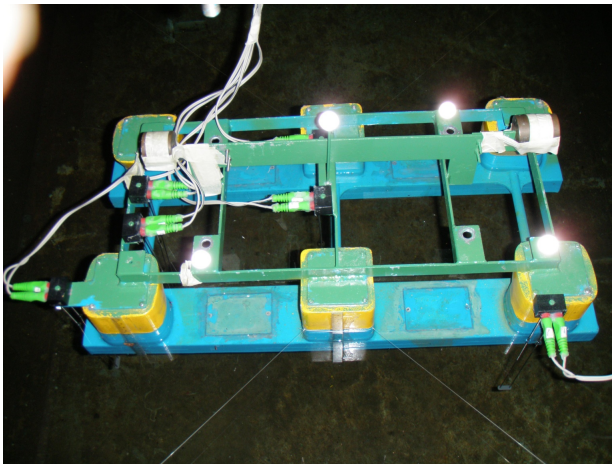
Dr. Zhenhua Huang

Affiliation	School of Civil and Environmental Engineering Nanyang Technological University Singapore	
Position	Assistant Professor at CEE, NTU and Principal Investigator at EOS, NTU	
Qualification	PhD, Massachusetts Institute of Technology, USA MEng and BEng, Tsinghua University, PRC	
Research Interest	<ul style="list-style-type: none">➤ Marine energy➤ Floating structures➤ Dynamics of semi-submersibles➤ Air-gap analysis for offshore oil rigs➤ Motion reduction for offshore structures	
Contact	School of Civil and Environmental Engineering Nanyang Technological University 50 Nanyang Avenue Singapore 639798 Phone: (65) 67904737 Email: zhhuang@ntu.edu.sg	

Motion responses of semi-submersibles



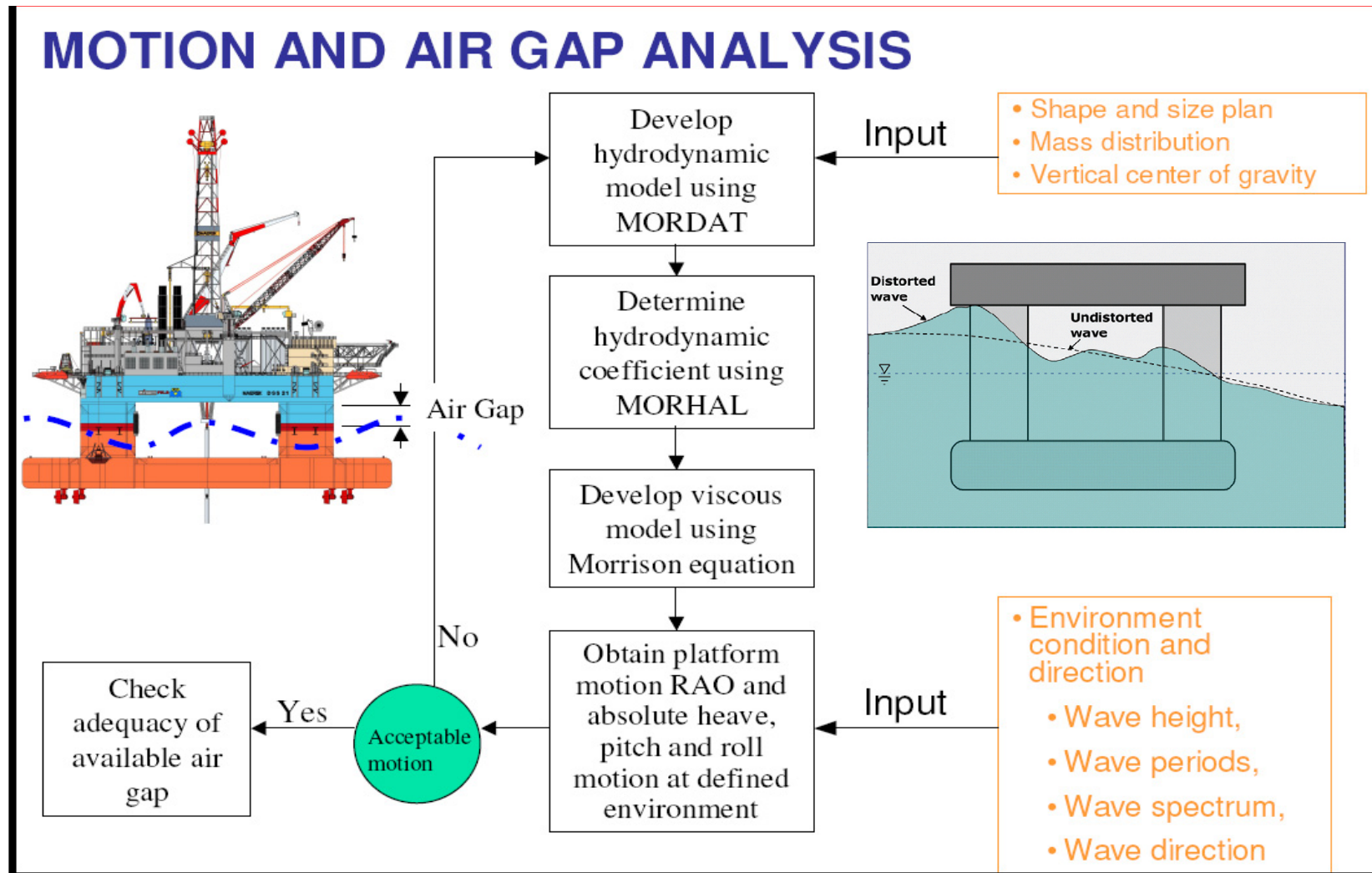
Maintenance semi-submersible accommodation unit (MSSAU)



Surge RAO of MSSAU-1

Project sponsored by MPA, Keppel, and ABS

Air-gap analysis of semi-submersibles

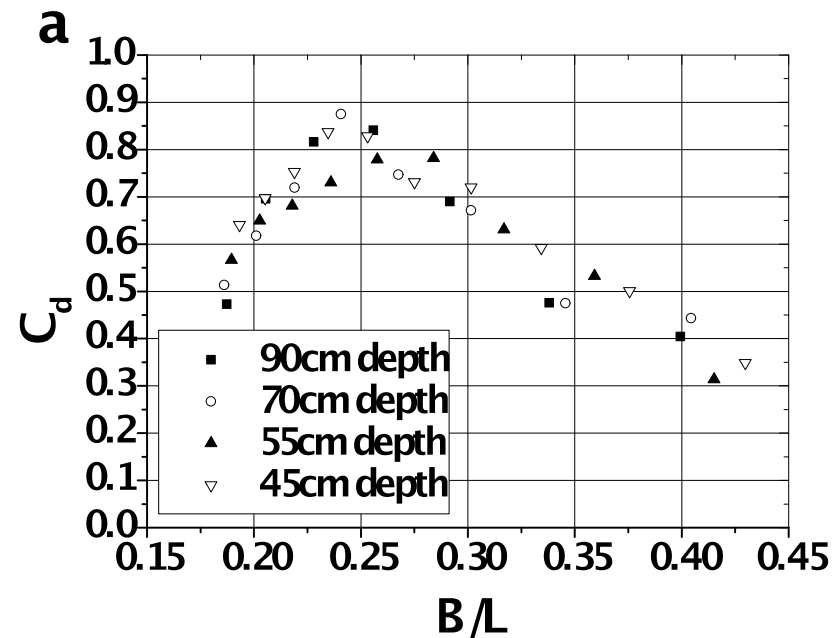


Project sponsored by MPA, Keppel, and ABS

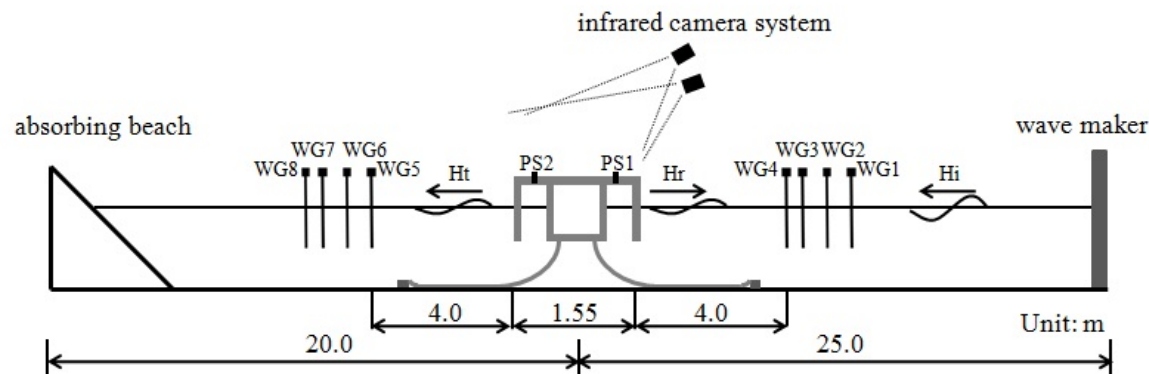
Combining wave energy converters with shore protection structures (floating breakwaters)



The floating breakwater equipped with oscillating water column devices



Energy removed from the wave field



Project is sponsored by MOE Tire2 project