



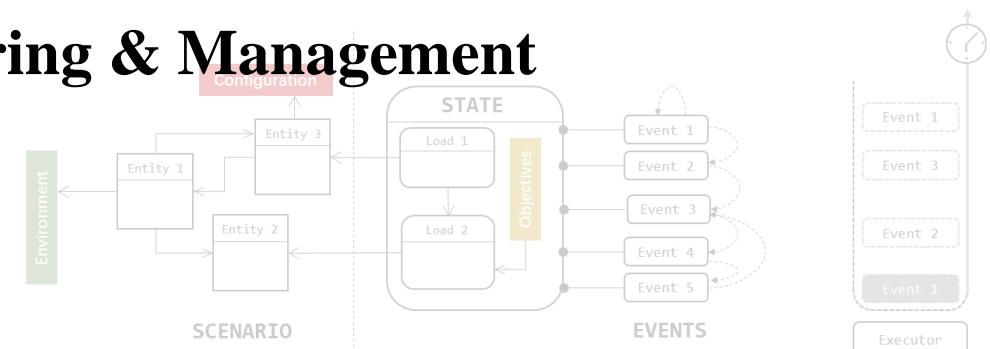
NUS
National University
of Singapore

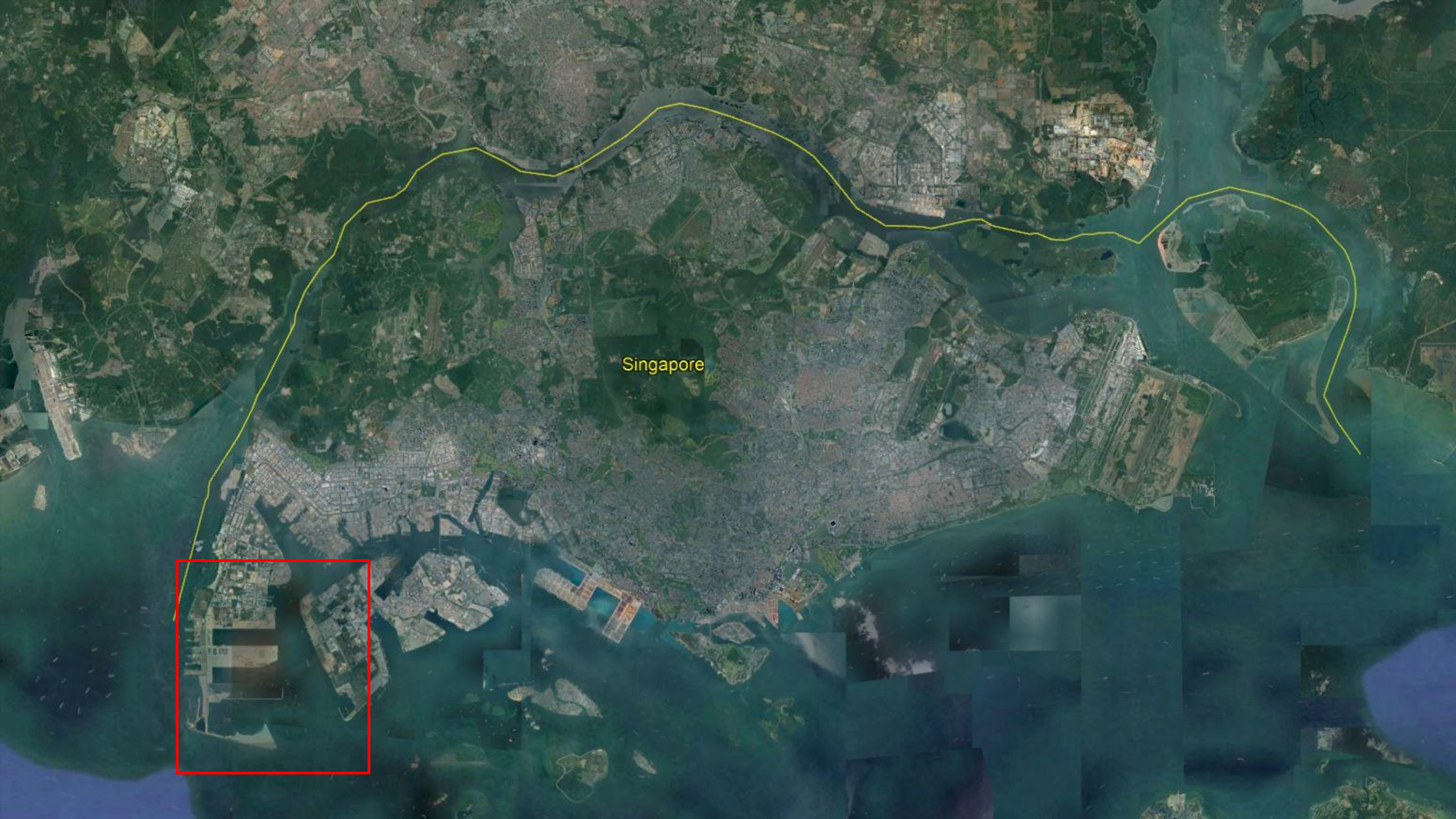
Centre of Excellence in Modelling and
Simulation for Next Generation Ports
Faculty of Engineering

Development of Digital Twin for Tuas Port Construction Activities



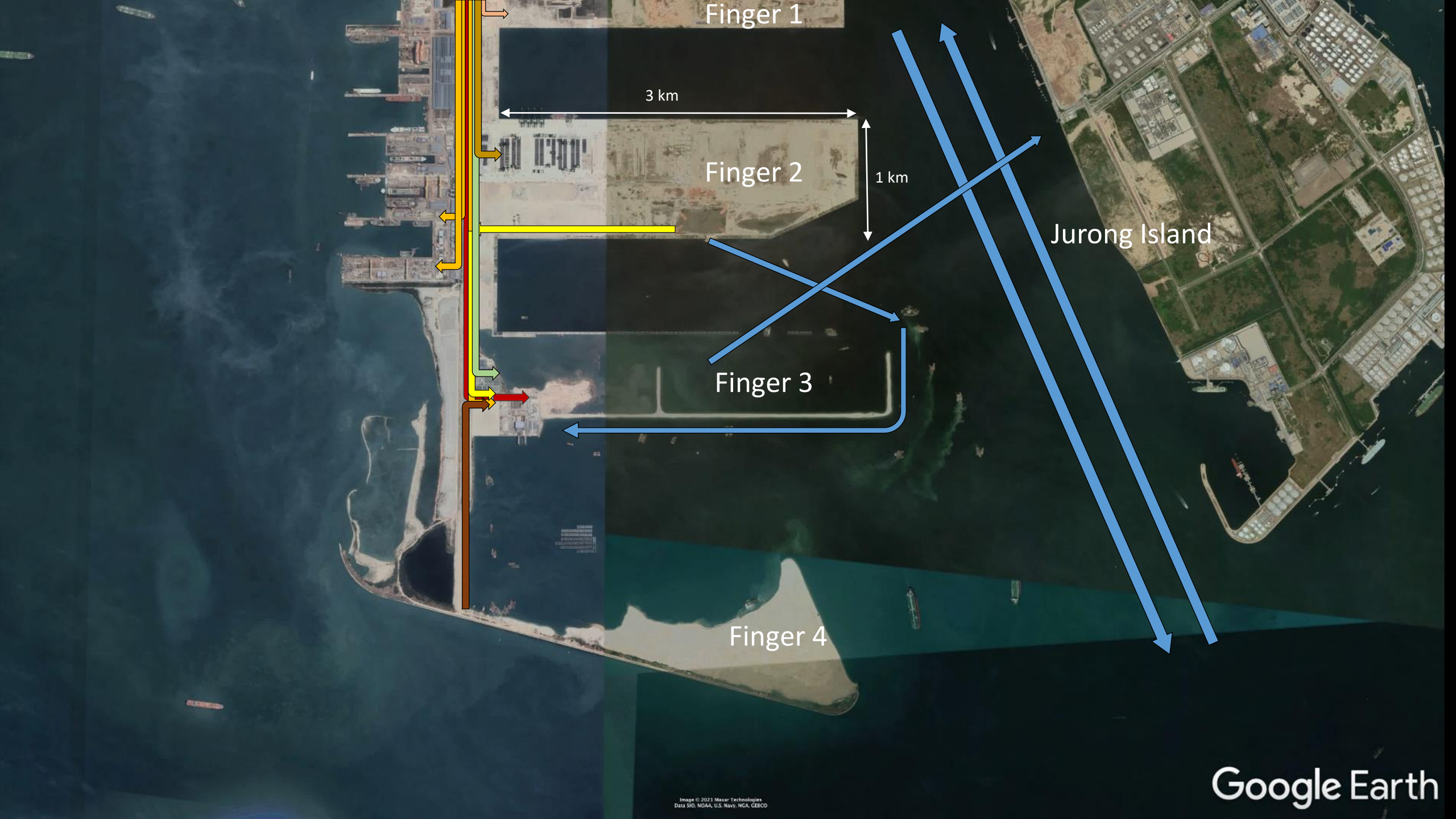
Lee Loo Hay
Professor, Dept of Industrial Systems Engineering & Management
Co-Director C4NGP
National University of Singapore





Singapore





Finger 1

3 km

Finger 2

1 km

Jurong Island

Finger 3

Finger 4

Google Earth

Image © 2021 Maxar Technologies
Data SIO, NOAA, U.S. Navy, NGA, GEBCO

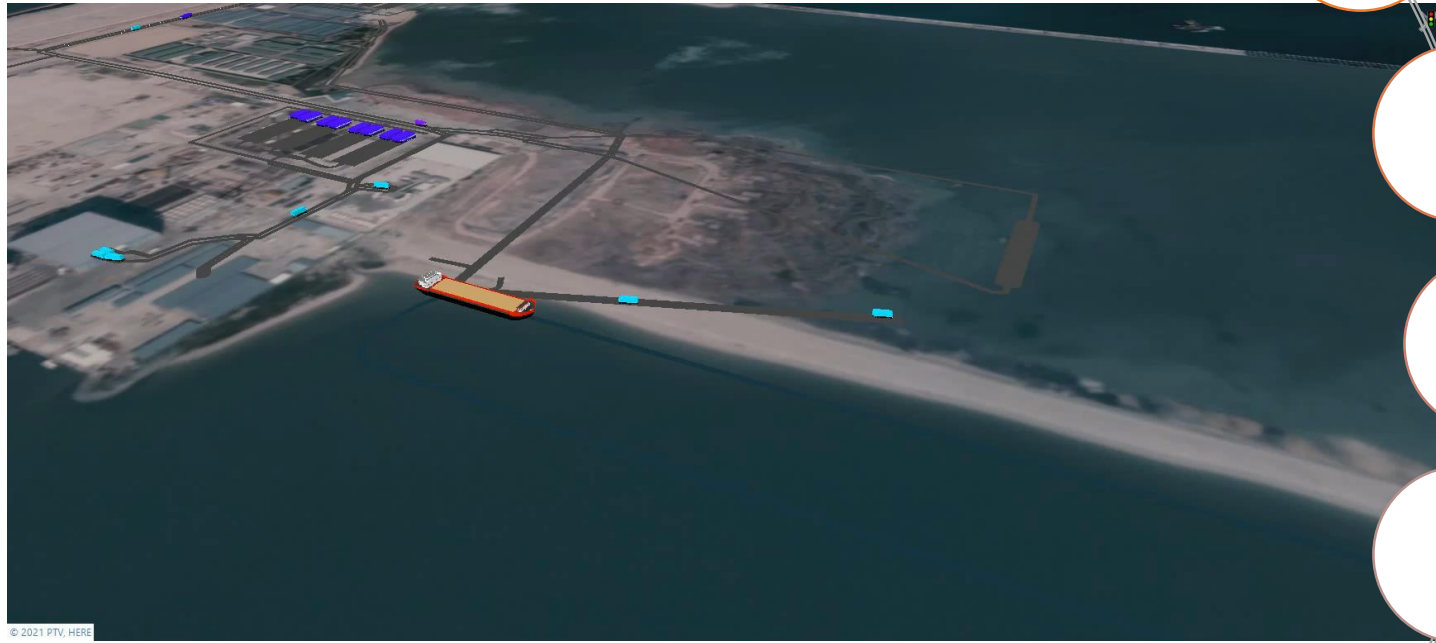


Traffic Situation at Site



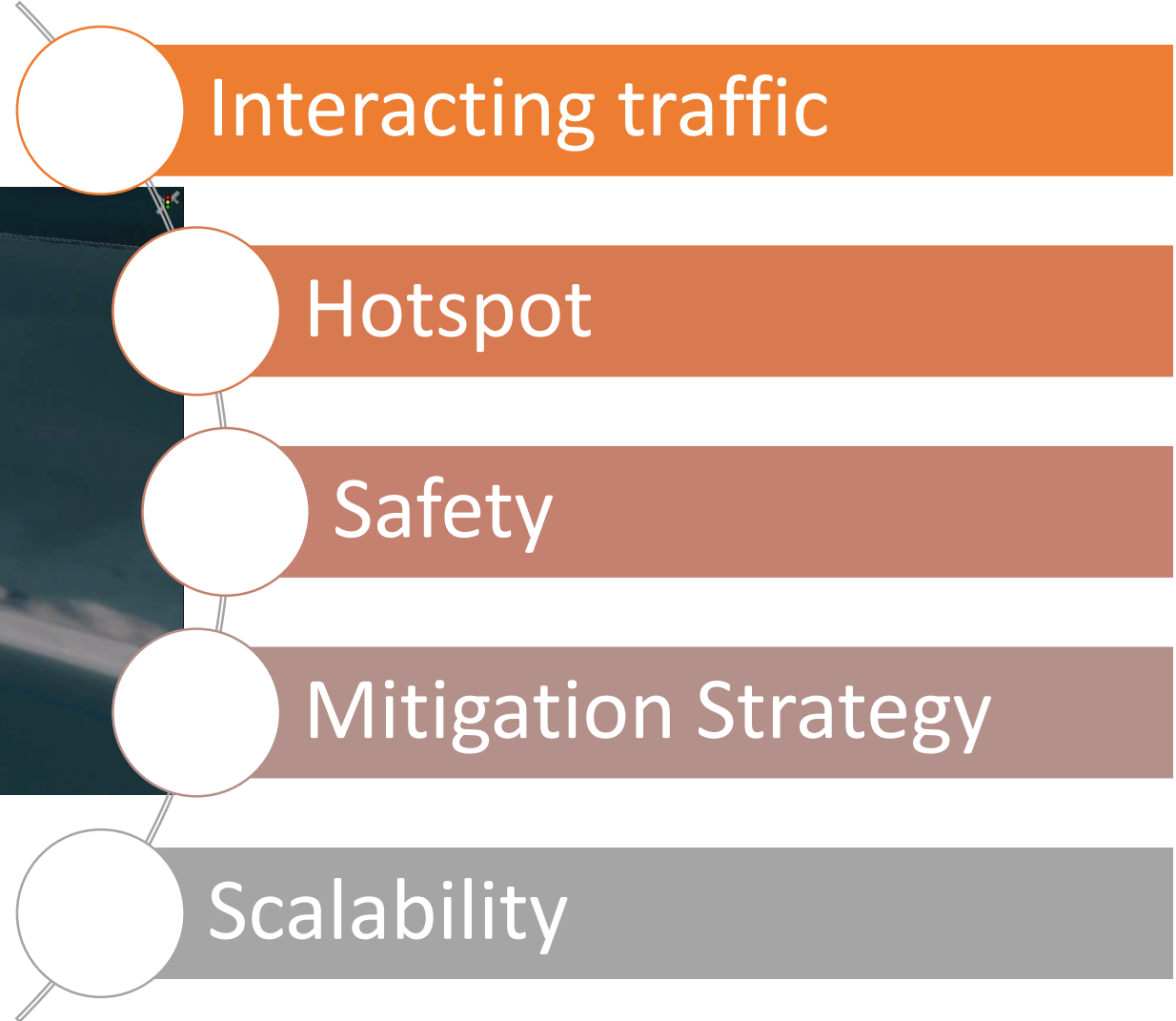
NUS
National University
of Singapore

Centre of Excellence in Modelling and
Simulation for Next Generation Ports
Faculty of Engineering



© 2021 PTV, HERE

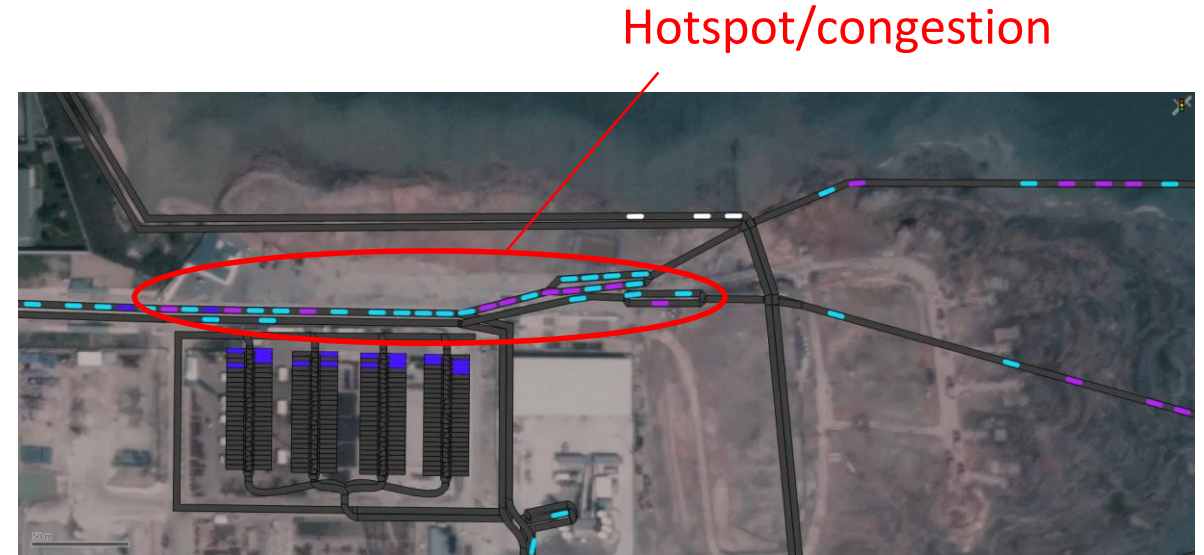
Digital Twin for Tuas Construction Site



Traffic Hotspot Prediction



Current situation:
soil truck traffic



Future situation:
soil truck traffic + planned additional 70 sand trucks



Safety (contractors and users)



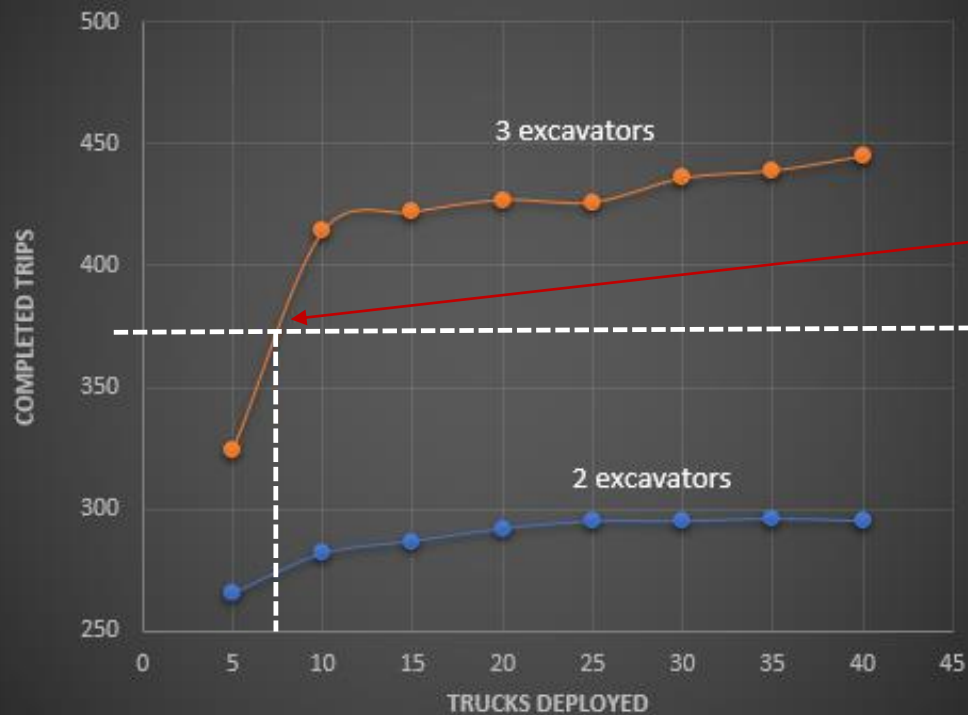
Reduce in operating efficiency and delay



Mitigation strategies



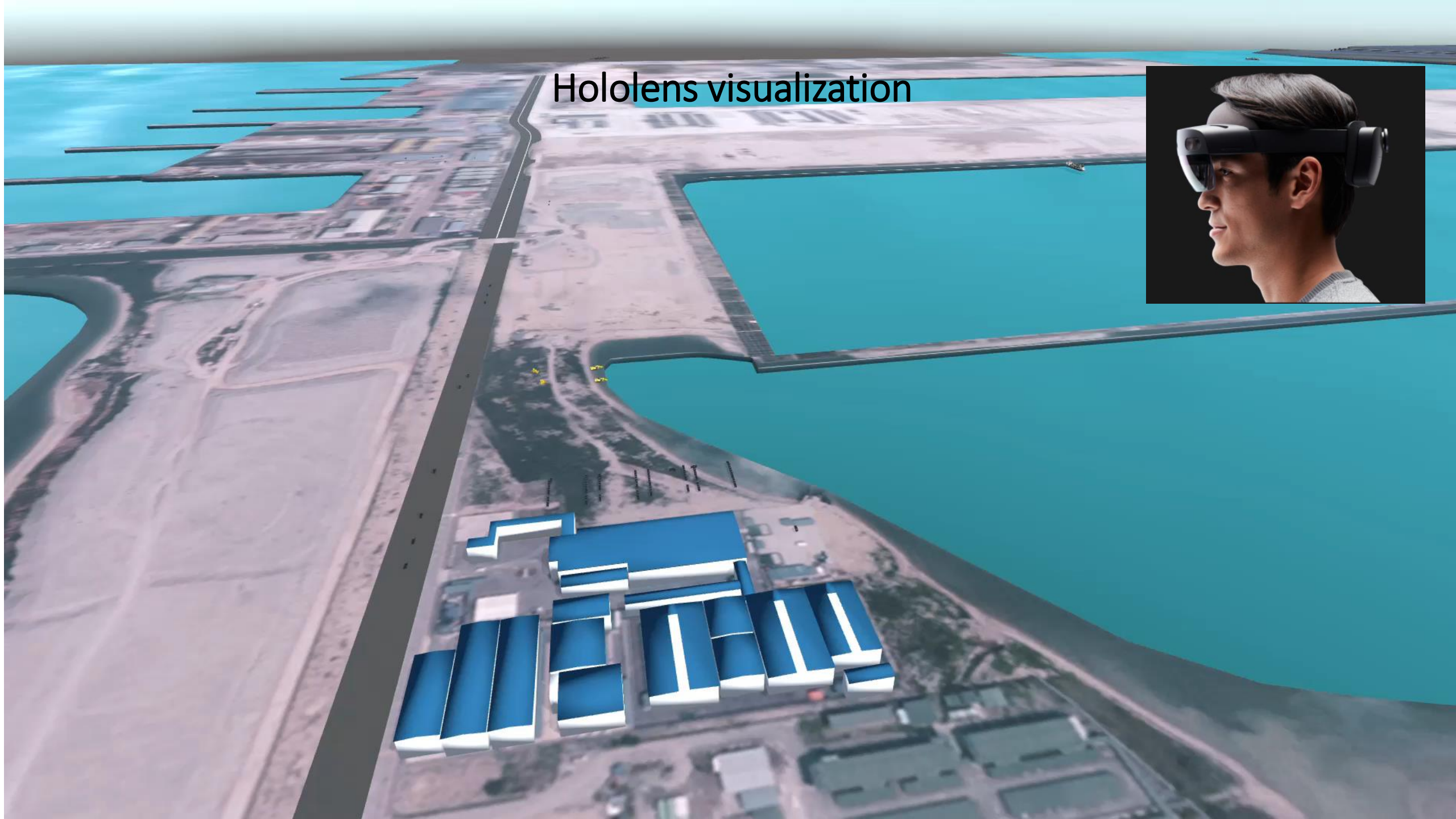
Pelican to dumping ground



Base on digital twin results:

7 trucks to carry the sand
3 excavators at loading point

Hololens visualization



Digital Twin



Crystal Ball to see the Future

**Center of Modeling and Simulation for Next Generation Port (C4NGP)
@ Innovation 4.0, NUS**

